



**GROVE**<sup>®</sup>  
by **Manitowoc**

# GRT655/GRT655L

## Product guide

ASME B30.5  
Imperial 85%



### Features

- 51 t (55 Ust) capacity
- **GRT655**: 10,6 m - 34,8 m (34.9 ft - 114.3 ft) four-section full-power boom
- **GRT655L**: 10,8 m - 43,0 m (35.3 ft - 141.2 ft) five-section full-power boom
- 7,92 m - 13,7 m (26 ft - 45 ft) manual offsettable telescopic swingaway extension
- Intuitive, user friendly controls with electronic joysticks and operator customizable function speeds
- Full vision cab with 20° tilt

# GROVE GRT655/GRT655L

The GRT655/GRT655L was designed after gathering feedback from crane owners and operators to ensure that it is loaded with the features and reliability you demand.

## Features

### > Tilt cab

The tilt cab is designed with operator comfort and productivity in mind. Offering a full-vision design and 20° tilt for improved viewing at high boom angles. The tilt/telescoping steering wheel can also be positioned for optimum use.



### > Crane Control system

The Crane Control System (CCS) offers a user-friendly interface, two full graphic displays mounted vertically for easier viewing and a jog dial for easier navigation and data input. The system allows the electronic controllers to be reprogrammed by the operator for specific speed and reaction. Parts commonality across Grove, Manitowoc and Potain product lines enhances operator familiarization and serviceability.



### > Boom

Two boom options provide you with the versatility you demand. The GRT655 comes equipped with a 10,6 m - 34,8 m (34.9 ft - 114.3 ft) four-section, full-power boom. The GRT655L is equipped with a 10,8 m - 43,0 m (35.3 ft - 141.2 ft) five-section, full-power boom. Optional 7,92 m - 13,7 m (26 ft - 45 ft) manual offsettable telescopic swingaway extension adds to your lifting capabilities.



### > Backing up our promise

We stand behind our new line of GRT cranes, and we are willing to prove it. With new three-, four- or five-year extended warranty programs as well as a new two-year standard warranty; our GRT line of cranes are built to be GROVE REAL TOUGH.

**THE ONLY FIVE-YEAR**  
**WARRANTY PROGRAM**  
**AVAILABLE IN THE INDUSTRY**

## GRT655/GRT655L benefits

- > Higher nominal capacity and stronger load charts ensure higher rental rates
- > Industry-leading boom tip height and reach provide higher utilization and greater versatility
- > Innovative smart sensing outrigger position monitoring
- > Improved air conditioning and heating for the world market



**Manitowoc Crane Care when you need it.**  
The assurance of the world's most advanced crane service and support to get you back to work fast.



**Manitowoc Finance helps you get right to work generating profits for your business.**  
Financial tools that help you capitalize on opportunity with solutions that fit your needs.

# Contents

Dimensions ..... 5

Weights ..... 7

Working range - GRT655..... 9

Load charts - GRT655 ..... 8

Working range - GRT655L..... 12

Load charts - GRT655L..... 13

Load handling ..... 16

Specifications..... 17

Symbols glossary..... 19

# Dimensions

## GRT655

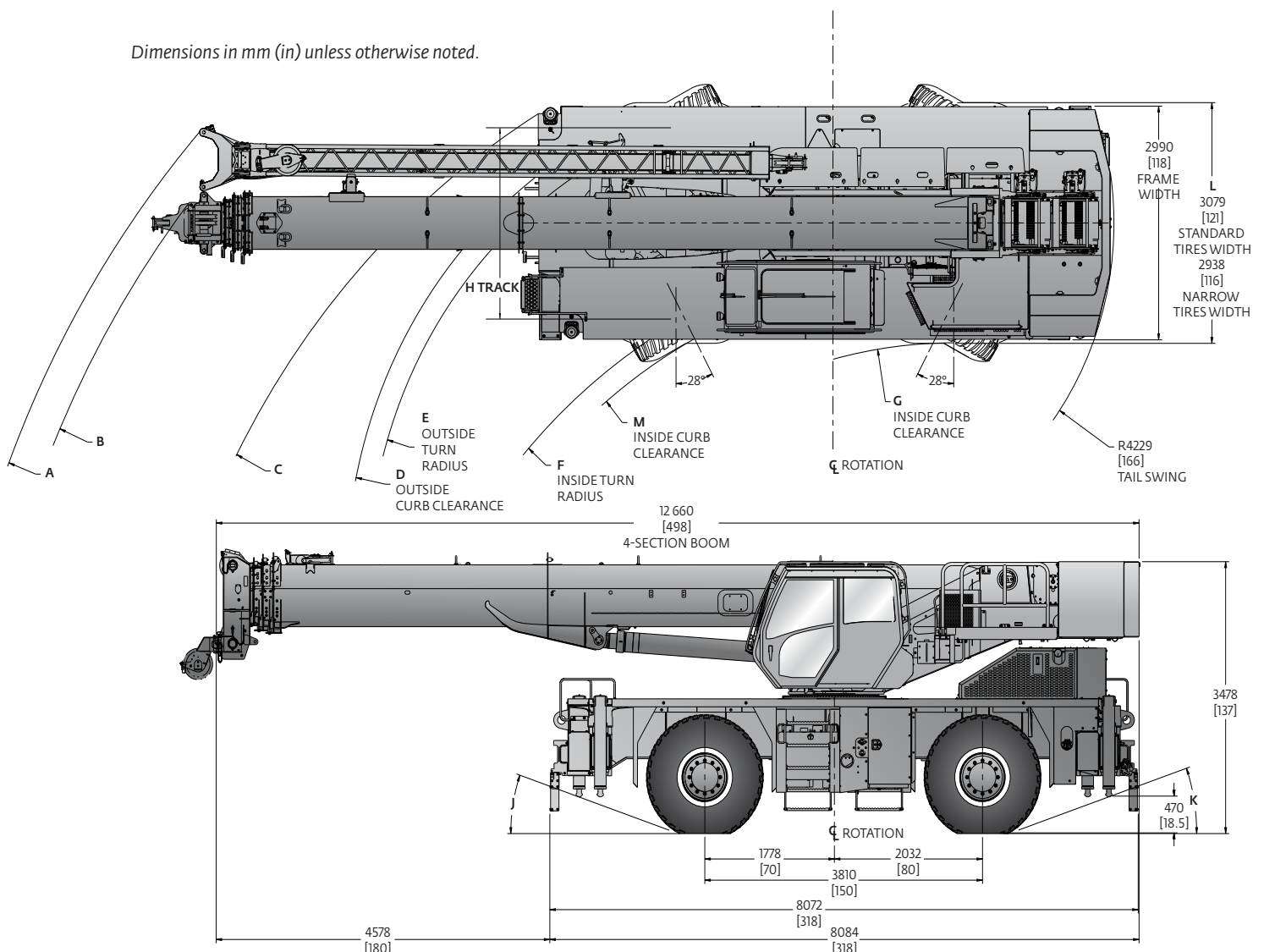
### Standard tire size: 23.5 x 25

Two-Wheel Steer	A	B	C	D	E	F	G	H	J	K	L	M
	13 927 mm (548")	13 450 mm (530")	11 125 mm (438")	10 459 mm (412")	10 161 mm (400")	7864 mm (310")	6623 mm (261")	2464 mm (97")	25°	21°	3079 mm (121")	7564 mm (298")
Four-Wheel Steer	A	B	C	D	E	F	G	H	J	K	L	M
	10 210 mm (402")	9860 mm (388")	7082 mm (279")	6435 mm (253")	6140 mm (242")	3813 mm (150")	3513 mm (138")	2464 mm (97")	25°	21°	3079 mm (121")	3514 mm (138")

### Narrow tire size: 18.0 x 25

Two-Wheel Steer	A	B	C	D	E	F	G	H	J	K	L	M
	13 928 mm (548")	13 450 mm (530")	11 125 mm (438")	10 386 mm (409")	10 138 mm (399")	7888 mm (311")	6688 mm (263")	2439 mm (96")	19°	19°	2938 mm (116")	7577 mm (298")
Four-Wheel Steer	A	B	C	D	E	F	G	H	J	K	L	M
	10 210 mm (402")	9860 mm (388")	7082 mm (279")	6362 mm (250")	6116 mm (241")	3837 mm (151")	3587 mm (141")	2439 mm (96")	19°	19°	2938 mm (116")	3526 mm (139")

Dimensions in mm (in) unless otherwise noted.





# Dimensions

## GRT655L

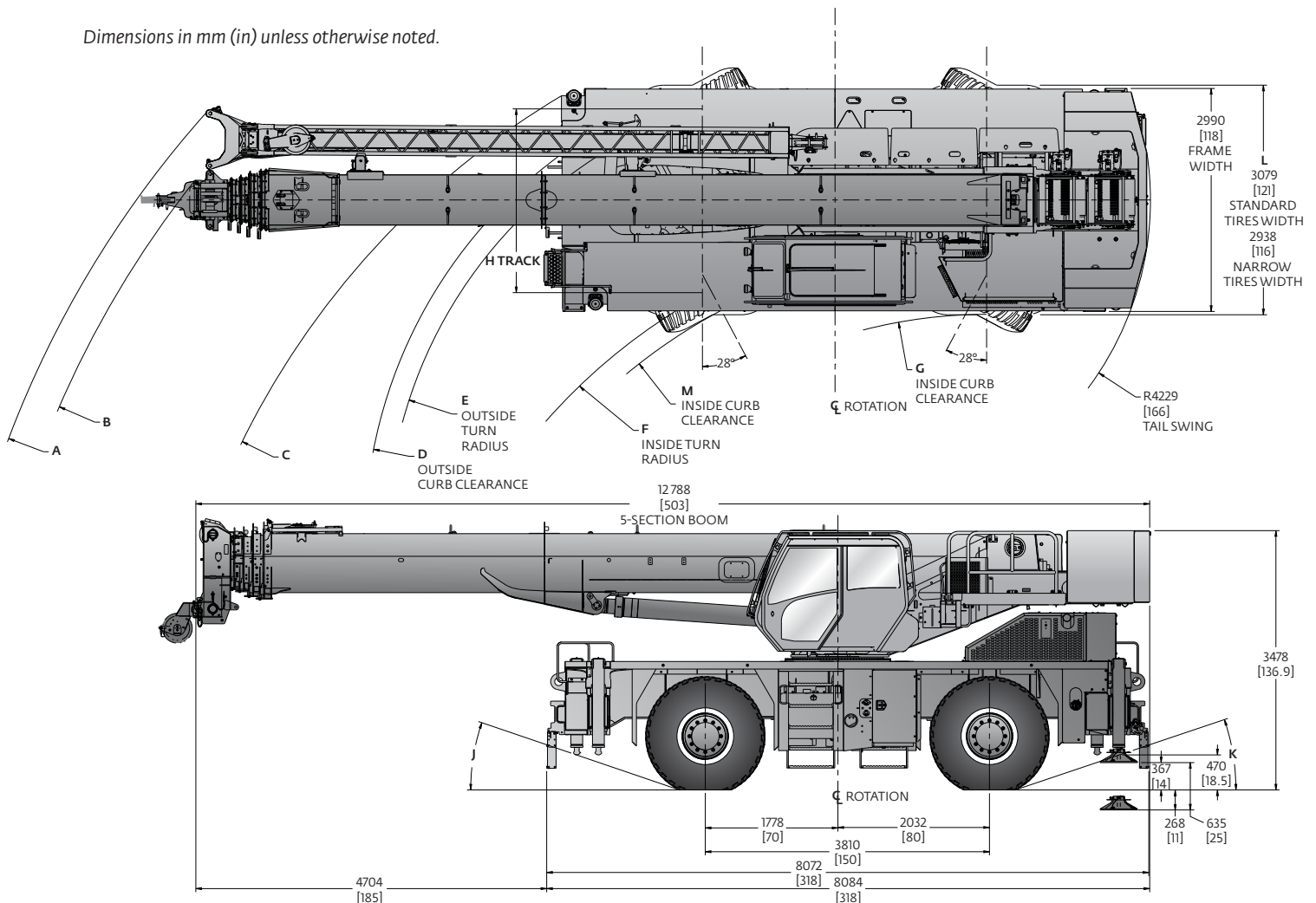
### Standard tire size: 23.5 x 25

Two-Wheel Steer	A	B	C	D	E	F	G	H	J	K	L	M
	14 017 mm (552")	13 548 mm (533")	11 125 mm (438")	10 459 mm (412")	10 161 mm (400")	7864 mm (310")	6623 mm (261")	2464 mm (97")	25°	21°	3079 mm (121")	7564 mm (298")
Four-Wheel Steer	A	B	C	D	E	F	G	H	J	K	L	M
	10 309 mm (406")	9969 mm (392")	7082 mm (279")	6435 mm (253")	6140 mm (242")	3813 mm (150")	3513 mm (138")	2464 mm (97")	25°	21°	3079 mm (121")	3514 mm (138")

### Narrow tire size: 18.0 x 25

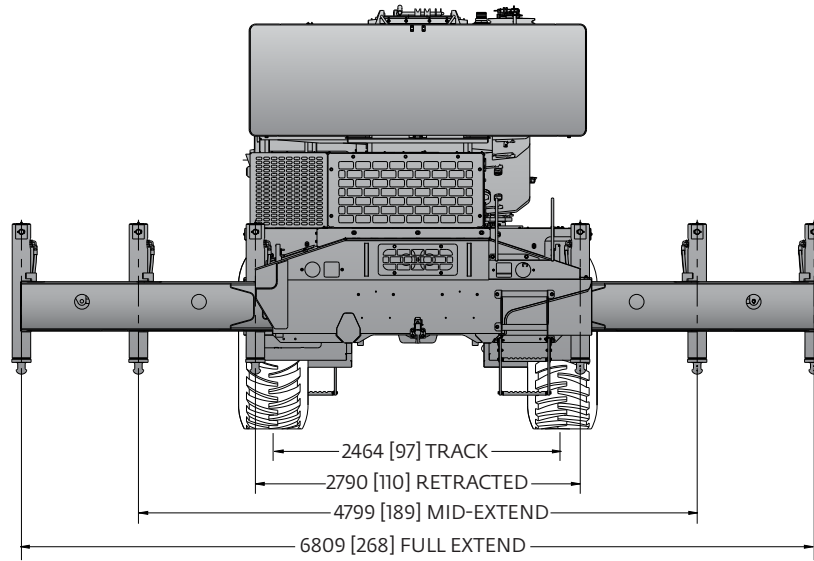
Two-Wheel Steer	A	B	C	D	E	F	G	H	J	K	L	M
	14 017 mm (552")	13 548 mm (533")	11 125 mm (438")	10 386 mm (409")	10 138 mm (399")	7888 mm (311")	6688 mm (263")	2439 mm (96")	19°	19°	2938 mm (116")	7577 mm (298")
Four-Wheel Steer	A	B	C	D	E	F	G	H	J	K	L	M
	10 309 mm (406")	9969 mm (392")	7082 mm (279")	6362 mm (250")	6116 mm (241")	3837 mm (151")	3587 mm (141")	2439 mm (96")	19°	19°	2938 mm (116")	3526 mm (139")

Dimensions in mm (in) unless otherwise noted.



# Dimensions and weights

## GRT655 and GRT655L



### Weights - GRT655

	Gross		Front		Rear	
	kg	lb	kg	lb	kg	lb
<b>Basic Machine:</b> including four- section 34,8 m (114.3 ft) main boom, main hoist with 180 m (590 ft) of wire rope, IPO, full pinned counterweight, air conditioner, full aluminum decking, and hoist access platform and Tier 4F engine	32 779	72,263	13 787	30,395	18 991	41,868
<b>Add:</b> 51 t (55 USt) five-sheave hook block stowed in trough	425	937	439	968	-14	-31
<b>crane weight</b>	33 204	73,200	14 226	31,363	18 977	41,837
<b>Add:</b> 6.0 t (6.6 USt) headache ball	105	231	168	371	-64	-140
<b>crane weight</b>	33 308	73,431	14 395	31,734	18 914	41,697
<b>Add:</b> 7.92 m-13.7 m (26 ft -45 ft) telescopic swingaway + carrier brackets + aux. nose	978	2155	1778	3919	-800	-1764
<b>crane weight</b>	34 286	75,586	16 172	35,653	18 113	39,933
<b>Add:</b> Auxiliary Hoist + 180 m (590 ft) of wire rope ILO IPO	25	54	-4	-9	29	63
<b>crane weight</b>	34 310	75,640	16 168	35,644	18 142	39,996

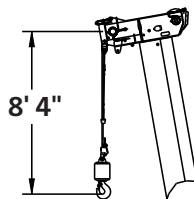
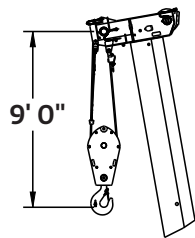
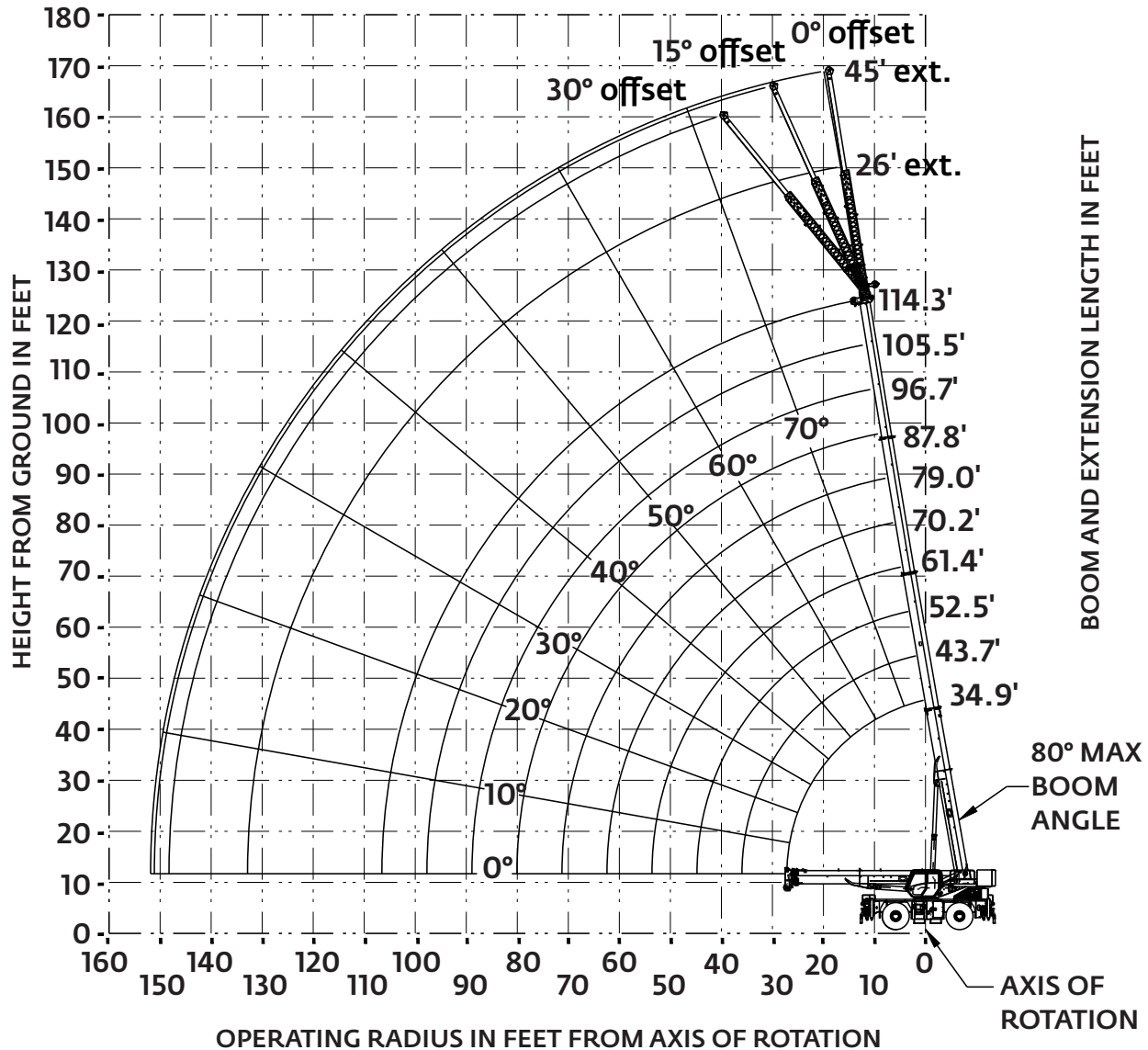
### Weights - GRT655L

	Gross		Front		Rear	
	kg	lb	kg	lb	kg	lb
<b>Basic Machine:</b> including five- section 43,0 m (141.2 ft) main boom, main hoist with 180 m (590 ft) of wire rope, IPO, full pinned counterweight, air conditioner, full aluminum decking, and hoist access platform and Tier 4F engine	33 058	72,880	15 138	33,372	17 921	39,508
<b>Add:</b> 51 t (55 USt) five-sheave hook block stowed in trough	425	937	439	968	-14	-31
<b>crane weight</b>	33 483	73,817	15 577	34,340	17 906	39,477
<b>Add:</b> 6.0 t (6.6 USt) headache ball	105	231	168	371	-64	-140
<b>crane weight</b>	33 588	74,048	15 745	34,711	17 843	39,337
<b>Add:</b> 7.92 m-13.7 m (26 ft -45 ft) telescopic swingaway + carrier brackets + aux. nose	978	2155	1778	3919	-800	-1764
<b>crane weight</b>	34 566	76,203	17 523	38,630	17 043	37,573
<b>Add:</b> Auxiliary Hoist + 180 m (590 ft) of wire rope ILO IPO	25	54	-4	-9	29	63
<b>crane weight</b>	34 590	76,257	17 519	38,621	17 072	37,636

# Working range

## GRT655

### Working range diagram with bi-fold extension



DIMENSIONS ARE FOR THE LARGEST GROVE FURNISHED HOOK BLOCK AND OVERHAUL BALL, WITH ANTI-TWO BLOCK ACTIVATED.

THIS CHART IS ONLY A GUIDE AND SHOULD NOT BE USED TO OPERATE THE CRANE.  
The individual crane's load chart, operating instructions and other instructional plates must be read and understood prior to operating the crane



# Load chart

## GRT655

  
35 ft – 114 ft

  
12,300 lb

  
100%

  
360°



Pounds

Radius in Feet	Main Boom Length in Feet									
	34.9	43.7	52.5	61.4	70.2	79	87.8	96.7	105.5	114.3
8	110,000 (68.5)	—	—	—	—	—	—	—	—	—
10	88,750 (65)	81,000 (70.5)	79,700 (74)	79,200 (77)	72,650 (79.5)	—	—	—	—	—
12	80,150 (61)	78,100 (67.5)	76,400 (72)	75,050 (75)	68,200 (77.5)	*57,800 (80)	—	—	—	—
15	69,550 (55)	68,200 (63)	66,700 (68)	65,450 (72)	60,450 (75)	51,050 (77)	42,250 (79)	*34,500 (80)	—	—
20	55,300 (43)	55,800 (55.5)	54,900 (62)	53,900 (67)	49,400 (70.5)	42,050 (73)	34,950 (75.5)	33,300 (77)	28,100 (78.5)	*25,800 (80)
25	40,400 (26)	43,300 (46.5)	43,750 (55.5)	44,100 (61.5)	41,300 (66)	35,150 (69)	29,250 (72)	28,150 (74)	27,000 (76)	24,600 (77.5)
30	—	34,750 (35)	35,200 (48)	35,500 (56)	35,250 (61.5)	29,950 (65)	24,900 (68.5)	23,950 (71)	23,150 (73)	21,800 (75)
35	—	24,950 (17)	28,150 (39.5)	28,300 (50)	28,450 (56.5)	25,950 (61)	21,500 (64.5)	20,650 (67.5)	20,000 (70)	19,400 (72)
40	—	—	22,050 (29)	22,300 (43)	22,500 (51)	22,750 (56.5)	18,750 (61)	18,050 (64.5)	17,450 (67)	16,900 (69.5)
45	—	—	—	18,050 (34.5)	18,300 (45.5)	18,500 (52)	16,550 (57)	15,900 (61)	15,350 (64)	14,900 (66.5)
50	—	—	—	14,850 (24)	15,150 (38.5)	15,300 (47)	14,700 (53)	14,100 (57.5)	13,600 (61)	13,150 (64)
55	—	—	—	—	12,700 (30.5)	12,900 (41.5)	13,000 (48.5)	12,550 (53.5)	12,100 (57.5)	11,700 (61)
60	—	—	—	—	10,700 (19)	10,900 (35)	11,050 (43.5)	11,150 (49.5)	10,850 (54)	10,500 (58)
65	—	—	—	—	—	9300 (27)	9470 (38)	9560 (45)	9570 (50.5)	9420 (54.5)
70	—	—	—	—	—	7950 (14)	8100 (32)	8220 (40.5)	8240 (46.5)	8240 (51.5)
75	—	—	—	—	—	—	6950 (23.5)	7070 (35)	7120 (42.5)	7140 (48)
80	—	—	—	—	—	—	4650 (6.5)	6070 (29)	6150 (38)	6190 (44)
85	—	—	—	—	—	—	—	5210 (20.5)	5300 (32.5)	5370 (40)
90	—	—	—	—	—	—	—	—	4550 (26)	4640 (35.5)
95	—	—	—	—	—	—	—	—	3900 (17)	3990 (30)
100	—	—	—	—	—	—	—	—	—	3410 (23.5)
105	—	—	—	—	—	—	—	—	—	2890 (13.5)
Min. boom angle for indicated length (no load)										12°
Max. boom length at 0° boom angle (no load)										105.5 ft

NOTE: ( ) Boom angles are in degrees.

\*This capacity is based on maximum boom angle.

Boom Angle	Main Boom Length in Feet									
	34.9	43.7	52.5	61.4	70.2	79	87.8	96.7	105.5	114.3
0°	17,600 (27.1)	12,700 (35.9)	9480 (44.7)	7160 (53.6)	5420 (62.4)	4060 (71.2)	2970 (80)	2070 (88.9)	1320 (97.7)	—

NOTE: ( ) Reference radii in feet.

80100630

THIS CHART IS ONLY A GUIDE AND SHOULD NOT BE USED TO OPERATE THE CRANE.

The individual crane's load chart, operating instructions and other instructional plates must be read and understood prior to operating the crane

# Load chart

## GRT655



114 ft



26 ft – 45 ft



12,300 lb



100%



360°



Pounds

Radius in Feet	26 ft Length			45 ft Length		
	0° Offset	15° Offset	30° Offset	0° Offset	15° Offset	30° Offset
20	*12,200 (80)	—	—	—	—	—
25	12,200 (79.5)	*9590 (80)	—	*8460 (80)	—	—
30	12,200 (77.5)	9000 (79)	*6710 (80)	7710 (79.5)	—	—
35	12,200 (75.5)	8490 (77.5)	6460 (79.5)	7060 (77.5)	*5120 (80)	—
40	11,950 (73.5)	8020 (75.5)	6230 (78)	6540 (76)	4890 (78.5)	—
45	10,950 (71.5)	7610 (73.5)	6030 (76)	6080 (74.5)	4670 (77)	*3750 (80)
50	10,100 (69.5)	7250 (71.5)	5840 (73.5)	5680 (72.5)	4470 (75)	3640 (79.5)
55	9410 (67.5)	6940 (69)	5670 (71.5)	5320 (70.5)	4290 (73.5)	3530 (77.5)
60	8800 (65.5)	6630 (67)	5520 (69.5)	5020 (69)	4130 (71.5)	3430 (76)
65	8270 (63)	6380 (65)	5380 (67)	4750 (67)	3980 (70)	3330 (74)
70	7790 (61)	6140 (62.5)	5250 (65)	4500 (65.5)	3840 (68)	3250 (72)
75	7140 (58.5)	5920 (60.5)	5130 (62.5)	4280 (63.5)	3720 (66)	3170 (70)
80	6160 (56)	5720 (58)	5020 (60)	4080 (61.5)	3600 (64)	3100 (68)
85	5320 (53.5)	5540 (55.5)	4930 (57)	3900 (59.5)	3480 (62)	3030 (65.5)
90	4580 (50.5)	4870 (53)	4850 (54.5)	3740 (57.5)	3370 (60)	2970 (63.5)
95	3930 (47.5)	4190 (50)	4370 (51)	3590 (55)	3280 (58)	2910 (61)
100	3360 (44.5)	3590 (46.5)	3730 (48)	3450 (53)	3180 (55.5)	2860 (58.5)
105	2840 (41)	3050 (43)	3160 (44.5)	3320 (50.5)	3100 (53)	2820 (56)
110	2380 (37.5)	2560 (39.5)	2650 (41)	3090 (48)	3020 (50.5)	2770 (53.5)
115	1960 (33.5)	2120 (35.5)	2190 (36.5)	2710 (45)	2950 (48)	2740 (50.5)
120	1580 (29)	1720 (31)	1770 (31.5)	2360 (42.5)	2740 (45)	2710 (47.5)
125	1240 (23.5)	1360 (25.5)	—	2040 (39)	2360 (42)	2480 (44)
130	—	1030 (17.5)	—	1750 (36)	2000 (38.5)	2090 (40.5)
135	—	—	—	1490 (32)	1680 (34.5)	1730 (36)
140	—	—	—	1240 (27.5)	1380 (30)	1410 (31)
145	—	—	—	1010 (22.5)	1110 (24.5)	—
Min. boom angle for indicated length (no load)	16°	16°	30°	21°	23°	30°
Max. boom length at 0° boom angle (no load)	79 ft			79 ft		

NOTE: ( ) Boom angles are in degrees.

\*This capacity is based on maximum boom angle.

80100636

- 26 ft and 45 ft folding boom extension lengths may be used for single line lifting service.
- Radii listed are for a fully extended boom with the boom extension erected. For main boom lengths less than fully extended, the rated loads are determined by boom angle. Use only the column which corresponds to the boom extension length and offset for which the machine is configured. For boom angles not shown, use the rating of the next lower boom angle.  
  
WARNING: Operation of this machine with heavier loads than the capacities listed is strictly prohibited. Machine tipping with boom extension occurs rapidly and without advance warning.
- Boom angle is the angle above or below horizontal of the longitudinal axis of the boom base section after lifting rated load.
- Capacities listed are with outriggers fully extended and vertical jacks set only.

THIS CHART IS ONLY A GUIDE AND SHOULD NOT BE USED TO OPERATE THE CRANE.

The individual crane's load chart, operating instructions and other instructional plates must be read and understood prior to operating the crane

# Load chart

## GRT655

 35 ft - 114 ft
  12,300 lb
  360°
  Stationary


 Pounds





Radius in Feet	Main Boom Length in Feet			
	34.9	43.7	52.5	61.4
10	40,700 (65)	38,000 (70.5)	—	—
12	34,350 (61)	34,350 (67.5)	28,000 (72)	—
15	25,400 (55)	25,800 (63.5)	25,600 (68.5)	23,000 (72)
20	15,750 (43)	16,300 (55.5)	16,650 (62.5)	17,100 (67)
25	10,150 (26.5)	11,000 (47.5)	11,450 (56)	11,700 (62)
30	—	7600 (37)	8100 (49)	8260 (56)
35	—	5230 (19)	5710 (41)	5890 (50)
40	—	—	3940 (30)	4160 (43.5)
45	—	—	—	2840 (36)
50	—	—	—	1810 (25)
Min. boom angle for indicated length (no load)				0°
Max. boom length at 0° boom angle (no load)				61.4 ft

NOTE: ( ) Boom angles are in degrees.

Boom Angle	Main Boom Length in Feet			
	34.9	43.7	52.5	61.4
0°	8460 (27.1)	4870 (35.9)	2620 (44.7)	1190 (53.6)

NOTE: ( ) Reference radii in feet. 80100634

- Capacities are in pounds and do not exceed 75% of tipping loads as determined by test in accordance with SAE J765.
- Capacities are applicable to machines equipped with OTR DL-3 E-3/L-3 - 23.5x25 (24 ply) tires at 87 psi cold inflation pressure, or OTR CL735 E-3/L-3 - 18.0x25 (28 ply) at 83 psi cold inflation pressure.
- Capacities are applicable only with machine on firm level surface.
- On rubber lifting with boom extension not permitted.
- For pick and carry operation, boom must be centered over front of machine, mechanical swing lock engaged and load restrained from swinging.

 35 ft - 114 ft
  12,300 lb
  Over Front
  Pick and carry up to 1 mph  
23.5 x 25 or 18.0x25


 Pounds

Radius in Feet	Main Boom Length in Feet			
	34.9	43.7	52.5	61.4
10	36,050 (65)	37,300 (70.5)	—	—
12	31,350 (61)	33,100 (67.5)	27,700 (72)	—
15	25,900 (55)	27,350 (63.5)	25,000 (68.5)	22,200 (72)
20	19,250 (43)	20,600 (55.5)	20,400 (62.5)	20,550 (67)
25	14,750 (26.5)	15,800 (47.5)	16,050 (56)	16,200 (62)
30	—	12,350 (37)	12,750 (49)	13,000 (56)
35	—	9700 (19)	10,250 (41)	10,500 (50)
40	—	—	8270 (30)	8550 (43.5)
45	—	—	—	6810 (36)
50	—	—	—	5340 (25)
Min. boom angle for indicated length (no load)				0°
Max. boom length at 0° boom angle (no load)				61.4 ft

NOTE: ( ) Boom angles are in degrees.

Boom Angle	Main Boom Length in Feet			
	34.9	43.7	52.5	61.4
0°	13,250 (27.1)	9280 (35.9)	6530 (44.7)	4480 (53.6)

NOTE: ( ) Reference radii in feet. 80100635

- Axle lockouts must be functioning when lifting on rubber.
- All lifting depends on proper tire inflation, capacity and condition. Capacities must be reduced for lower tire inflation pressures. See lifting capacity chart for tire used. Damaged tires are hazardous to safe operation of crane.
- Creep - not over 200 ft of movement in any 30 minute period and not exceeding 1 mph.

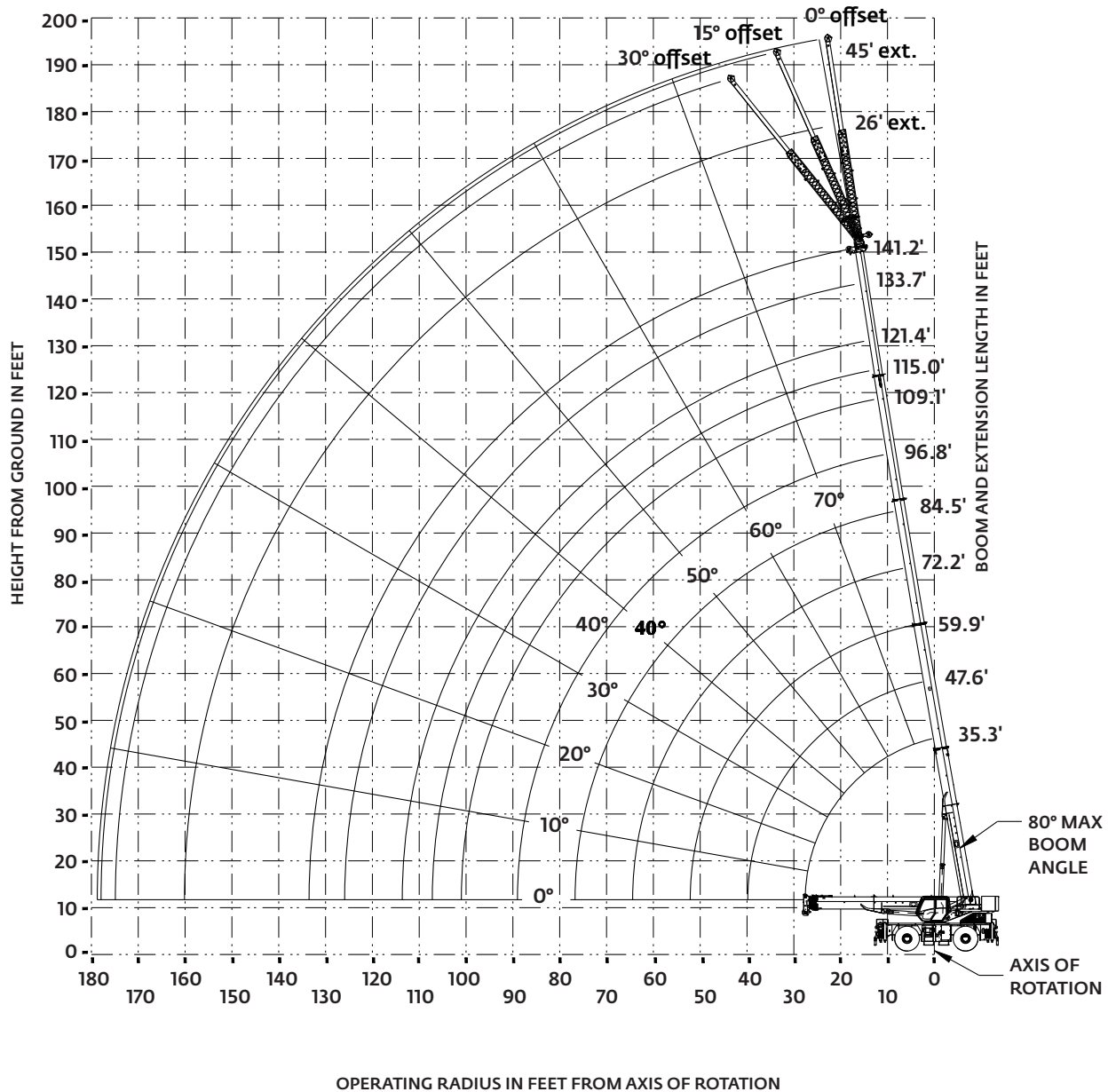
THIS CHART IS ONLY A GUIDE AND SHOULD NOT BE USED TO OPERATE THE CRANE.

The individual crane's load chart, operating instructions and other instructional plates must be read and understood prior to operating the crane

# Working range

## GRT655L

### Working range diagram with bi-fold extension



# Load chart

## GRT655L

  
35 ft – 141 ft

  
12,300 lb

  
100%

  
360°



Pounds

Radius in Feet	Main Boom Length in Feet									
	35.3	47.6	59.9	72.2	84.5	96.8	109.1	121.4	133.7	141.2
8	110,000 (68.5)	—	—	—	—	—	—	—	—	—
10	87,750 (64.5)	44,200 (72)	42,600 (76)	41,300 (79)	—	—	—	—	—	—
12	79,150 (61)	44,200 (69.5)	42,600 (74)	41,300 (77)	—	—	—	—	—	—
15	68,650 (55)	44,200 (65.5)	42,600 (71)	41,300 (74.5)	39,700 (77)	*36,000 (80)	—	—	—	—
20	54,550 (43.5)	44,200 (58.5)	42,600 (65.5)	40,700 (70.5)	36,250 (73.5)	31,450 (76)	*27,950 (80)	*21,300 (80)	—	—
25	40,300 (27)	43,100 (50.5)	42,400 (60)	36,250 (66)	32,250 (70)	27,750 (73)	24,900 (75.5)	21,300 (77.5)	*18,100 (80)	—
30	—	34,450 (41.5)	35,000 (54.5)	32,750 (61.5)	29,050 (66)	24,650 (70)	22,350 (72.5)	20,250 (75)	18,100 (77)	15,700 (79.5)
35	—	27,300 (30)	28,350 (48)	28,850 (56.5)	26,450 (62.5)	22,150 (66.5)	19,650 (70)	18,450 (72.5)	16,850 (74.5)	15,700 (75.5)
40	—	—	22,200 (40.5)	22,650 (51.5)	23,150 (58.5)	20,100 (63.5)	17,100 (67)	16,450 (70)	15,500 (72.5)	14,700 (73.5)
45	—	—	17,800 (31.5)	18,300 (46)	18,750 (54)	17,900 (60)	15,000 (64)	14,450 (67.5)	14,000 (70)	13,600 (71.5)
50	—	—	14,500 (19)	15,050 (40)	15,450 (50)	15,600 (56.5)	13,300 (61)	12,750 (65)	12,350 (68)	12,150 (69.5)
55	—	—	—	12,500 (33)	12,950 (45)	13,100 (52.5)	11,800 (58)	11,350 (62.5)	10,950 (65.5)	10,800 (67)
60	—	—	—	10,450 (23.5)	10,950 (39.5)	11,100 (48.5)	10,550 (55)	10,100 (59.5)	9790 (63)	9620 (65)
65	—	—	—	—	9300 (33.5)	9470 (44.5)	9460 (51.5)	9060 (56.5)	8740 (60.5)	8580 (62.5)
70	—	—	—	—	7900 (26)	8110 (39.5)	8240 (48)	8120 (53.5)	7820 (58)	7670 (60.5)
75	—	—	—	—	6710 (14.5)	6930 (34.5)	7050 (44)	7230 (50.5)	7000 (55.5)	6860 (58)
80	—	—	—	—	—	5920 (28)	6080 (39.5)	6250 (47.5)	6280 (52.5)	6140 (55.5)
85	—	—	—	—	—	5050 (19.5)	5230 (35)	5410 (43.5)	5470 (49.5)	5500 (53)
90	—	—	—	—	—	—	4480 (29.5)	4670 (40)	4740 (46.5)	4780 (50)
95	—	—	—	—	—	—	3810 (23)	4000 (35.5)	4100 (43.5)	4140 (47)
100	—	—	—	—	—	—	3220 (12.5)	3400 (31)	3520 (40)	3580 (44)
105	—	—	—	—	—	—	—	2870 (25.5)	2980 (36)	3070 (41)
110	—	—	—	—	—	—	—	2390 (17.5)	2510 (32)	2600 (37.5)
115	—	—	—	—	—	—	—	—	2080 (27)	2170 (33.5)
120	—	—	—	—	—	—	—	—	1690 (21)	1790 (29)
Min. boom angle for indicated length (no load)							11°	16°	20°	28°
Max. boom length at 0° boom angle (no load)							96.8 ft			

NOTE: ( ) Boom angles are in degrees.

\*This capacity is based on maximum boom angle.

Boom Angle	Main Boom Length in Feet									
	35.3	47.6	59.9	72.2	84.5	96.8	109.1	121.4	133.7	141.2
0°	16,350 (27.5)	10,350 (39.8)	6840 (52.1)	4500 (64.4)	2830 (76.7)	1590 (89)	—	—	—	—

NOTE: ( ) Reference radii in feet.

80100637

THIS CHART IS ONLY A GUIDE AND SHOULD NOT BE USED TO OPERATE THE CRANE.

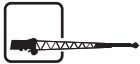
The individual crane's load chart, operating instructions and other instructional plates must be read and understood prior to operating the crane

# Load chart

## GRT655L



141 ft



26 ft – 45 ft



12,300 lb



100%



360°



Pounds

Radius in Feet	26 ft Length			45 ft Length		
	0° Offset	15° Offset	30° Offset	0° Offset	15° Offset	30° Offset
35	8610 (80)	—	—	—	—	—
40	8610 (77.5)	*8400 (80)	—	*6010 (80)	—	—
45	8610 (76)	7820 (78.5)	*6200 (80)	6010 (78.5)	—	—
50	8470 (74.5)	7280 (77)	6030 (78.5)	6010 (77)	4630 (80)	—
55	7860 (72.5)	6800 (75)	5870 (76.5)	5760 (75.5)	4460 (78)	—
60	7290 (71)	6360 (73)	5730 (75)	5460 (74)	4310 (76.5)	*3520 (80)
65	6780 (69.5)	5980 (71)	5440 (73)	5170 (72.5)	4170 (75)	3430 (78.5)
70	6330 (67.5)	5620 (69.5)	5160 (71)	4940 (71)	4040 (73.5)	3350 (76.5)
75	5930 (65.5)	5310 (67.5)	4900 (69)	4710 (69.5)	3920 (72)	3280 (75)
80	5570 (64)	5020 (65.5)	4660 (67)	4500 (68)	3810 (70.5)	3210 (73.5)
85	5240 (62)	4750 (63.5)	4440 (65)	4310 (66)	3700 (68.5)	3150 (71.5)
90	4890 (60)	4510 (61.5)	4230 (63)	4060 (64.5)	3600 (67)	3080 (70)
95	4200 (57.5)	4280 (59)	4050 (60.5)	3840 (63)	3440 (65)	3030 (68)
100	3530 (55.5)	3,890 (57)	3870 (58.5)	3640 (61)	3280 (63.5)	2980 (66.5)
105	2930 (53)	3240 (55)	3500 (56)	3450 (59)	3130 (61.5)	2930 (64.5)
110	2390 (50.5)	2660 (52.5)	2900 (53.5)	3270 (57)	2990 (59.5)	2820 (62.5)
115	1910 (48)	2140 (50)	2360 (51)	2810 (55)	2860 (57.5)	2710 (60)
120	1470 (45.5)	1660 (47.5)	1870 (48.5)	2300 (53)	2740 (55.5)	2610 (58)
125	1060 (43)	1230 (44.5)	1420 (45.5)	1830 (51)	2300 (53.5)	2310 (56)
130	—	—	1010 (42.5)	1400 (48.5)	1870 (51)	1940 (53.5)
135	—	—	—	1010 (46.5)	1480 (49)	1610 (51)
140	—	—	—	—	1120 (46.5)	1290 (48.5)
145	—	—	—	—	—	1010 (45.5)
Min. boom angle for indicated length (no load)	42°	43°	41°	45°	45°	44°
Max. boom length at 0° boom angle (no load)	72 ft			72 ft		

NOTE: ( ) Boom angles are in degrees.

\*This capacity is based on maximum boom angle.

80100642

- 26 ft and 45 ft folding boom extension lengths may be used for single line lifting service.
- Radii listed are for a fully extended boom with the boom extension erected. For main boom lengths less than fully extended, the rated loads are determined by boom angle. Use only the column which corresponds to the boom extension length and offset for which the machine is configured. For boom angles not shown, use the rating of the next lower boom angle.  
  
WARNING: Operation of this machine with heavier loads than the capacities listed is strictly prohibited. Machine tipping with boom extension occurs rapidly and without advance warning.
- Boom angle is the angle above or below horizontal of the longitudinal axis of the boom base section after lifting rated load.
- Capacities listed are with outriggers fully extended and vertical jacks set only.

THIS CHART IS ONLY A GUIDE AND SHOULD NOT BE USED TO OPERATE THE CRANE.

The individual crane's load chart, operating instructions and other instructional plates must be read and understood prior to operating the crane



# Load chart

## GRT655L

 35 ft - 141 ft  
 12,300 lb  
 360°  
 Stationary

 —————  Pounds —————





Radius in Feet	Main Boom Length in Feet			
	35.3	47.6	59.9	72.2
10	40,300 (64.5)	35,400 (71.5)	—	—
12	33,550 (61)	32,700 (69)	22,000 (73.5)	—
15	24,850 (54.5)	25,400 (65)	20,000 (70.5)	20,000 (74)
20	15,100 (44)	16,200 (58)	16,650 (65.5)	16,550 (70)
25	9800 (28.5)	10,950 (51)	11,350 (60)	11,350 (65.5)
30	—	7560 (42)	7980 (54.5)	8140 (61)
35	—	5170 (31)	5680 (48)	5880 (56.5)
40	—	—	4010 (41)	4250 (51.5)
45	—	—	2740 (32.5)	3020 (46)
50	—	—	1750 (19.5)	2050 (40.5)
55	—	—	—	1270 (33.5)
Min. boom angle for indicated length (no load)				32°
Max. boom length at 0° boom angle (no load)				59.9 ft

NOTE: ( ) Boom angles are in degrees.

Boom Angle	Main Boom Length in Feet			
	35.3	47.6	59.9	72.2
0°	7940 (27.5)	3470 (39.8)	1390 (52.1)	—

NOTE: ( ) Reference radii in feet. 80100640

- Capacities are in pounds and do not exceed 75% of tipping loads as determined by test in accordance with SAE J765.
- Capacities are applicable to machines equipped with OTR DL-3 E-3/L-3 - 23.5x25 (24 ply) tires at 87 psi cold inflation pressure, or OTR CL735 E-3/L-3 - 18.0x25 (28 ply) at 83 psi cold inflation pressure.
- Capacities are applicable only with machine on firm level surface.
- On rubber lifting with boom extension not permitted.
- For pick and carry operation, boom must be centered over front of machine, mechanical swing lock engaged and load restrained from swinging.

 35 ft - 141 ft  
 12,300 lb  
 Over Front  
 Pick and carry up to 1 mph  
 23.5 x 25 or 18.0x25

 —————  Pounds —————

Radius in Feet	Main Boom Length in Feet			
	35.3	47.6	59.9	72.2
10	30,500 (64.5)	30,500 (71.5)	—	—
12	26,450 (61)	24,000 (69)	21,500 (73.5)	—
15	21,800 (54.5)	20,700 (65)	19,600 (70.5)	19,400 (74)
20	17,750 (44)	18,800 (58)	17,700 (65.5)	17,400 (70)
25	13,650 (28.5)	15,150 (51)	15,700 (60)	15,400 (65.5)
30	—	11,750 (42)	12,400 (54.5)	13,400 (61)
35	—	9230 (31)	9870 (48)	10,850 (56.5)
40	—	—	7860 (41)	8640 (51.5)
45	—	—	6240 (32.5)	6860 (46)
50	—	—	4900 (19.5)	5390 (40.5)
55	—	—	—	4150 (33.5)
60	—	—	—	3110 (24)
Min. boom angle for indicated length (no load)				0°
Max. boom length at 0° boom angle (no load)				72.2 ft

NOTE: ( ) Boom angles are in degrees.

Boom Angle	Main Boom Length in Feet			
	35.3	47.6	59.9	72.2
0°	12,000 (27.5)	7290 (39.8)	4410 (52.1)	2300 (64.4)

NOTE: ( ) Reference radii in feet. 80100641

6. Axle lockouts must be functioning when lifting on rubber.
7. All lifting depends on proper tire inflation, capacity and condition. Capacities must be reduced for lower tire inflation pressures. See lifting capacity chart for tire used. Damaged tires are hazardous to safe operation of crane.
8. Creep - not over 200 ft of movement in any 30 minute period and not exceeding 1 mph.

THIS CHART IS ONLY A GUIDE AND SHOULD NOT BE USED TO OPERATE THE CRANE.

The individual crane's load chart, operating instructions and other instructional plates must be read and understood prior to operating the crane

# Load handling

Weight reductions for load handling devices	
Auxiliary boom nose	45 kg (100 lb)
<b>Hook blocks and headache balls:</b>	
51 t (55 USt), 5-sheave	425 kg (937 lb+)
32 t (35 USt), 4-sheave	388 kg (855 lb+)
17 t (18.7 USt), 1-sheave	261 kg (575 lb+)
6 t (6.6 USt) overhaul ball	105 kg (231 lb+)

+Refer to rating plate for actual weight.

Tire inflation - PSI (bar)				
	MFG/Model	Size (front and rear)	TRA Code	Lifting service, general travel and extended travel
				Static, creep
Standard	OTR/DL-3	23.5 x 25 (24 ply)	E-3/L-3	87 (6)
Narrow	OTR/CL735	18.0 x 25 (28 ply)	E-3/L-3	83 (5.7)

Line pulls and reeving information			
Hoists	Cable Specs.	Permissible Line Pulls	Nominal Cable Length
Main and Auxiliary	16 mm (5/8 in) 35x7 Class EEIPS + Rotation Resistant Min. Breaking strength 27 760 kg (61,200 lb)	5552 kg (12,240 lb)*	180 m (590 ft)
Main and Auxiliary	18 mm K100™ Hoist Rope Min. Breaking strength 28 895 kg (63,700 lb)	5780 kg (12,740 lb)*	185 m (606 ft)

The approximate weight of 16 mm (5/8 in) wire rope is 1,34 kg/m (0.90 lb/ft).

The approximate weight of 18 mm synthetic rope is 0,24 kg/m (0.16 lb/ft).

\*With certain boom and hoist tackle combinations, the allowable line pull may be limited by hoist performance. Refer to Hoist Performance table for lift planning to ensure adequate hoist performance on drum rope layer required.

Telescopic boom extension			
		Without overhaul weight or block	With overhaul ball
7,9 m - 13,7 m (26 ft - 45 ft)	*7,9 m (26 ft)	1315 kg (2900 lb)	1769 kg (3900 lb)
Telescopic boom extension	*13,7 m (45 ft)	1678 kg (3700 lb)	2359 kg (5200 lb)

\*Reduction of main boom capacities

(no deduct required for stowed boom extension)

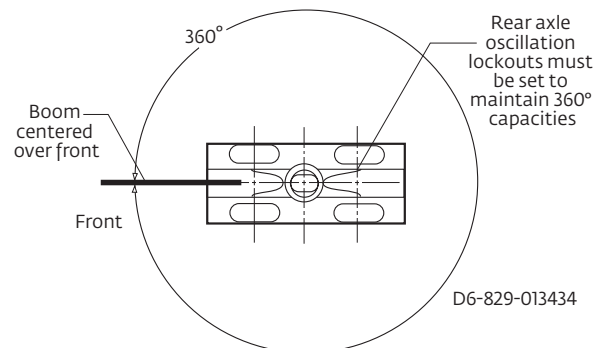
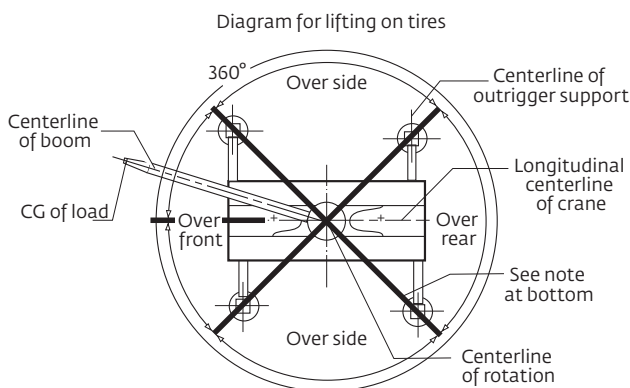
NOTE: All load handling devices and boom attachments are considered part of the load and suitable allowances MUST BE MADE for their combined weights. Weights are for Grove furnished equipment.

NOTE: When operating at temperatures below -40°F, capacities shall be derated 3.6% of rated load for each degree Fahrenheit below -40°F without shock load.

Hoist performance				
Wire rope layer	Hoist line pulls		Drum capacity	
	Two speed hoist		Layer m (ft)	Total m (ft)
	Low Available kg (lb)	High Available kg (lb)		
1	7515 (16,568)	3372 (7435)	29 (95)	29 (95)
2	6828 (15,053)	3064 (6756)	31,7 (104)	60,7 (199)
3	6256 (13,792)	2808 (6190)	34,7 (114)	95,1 (312)
4	5772 (12,726)	2590 (5711)	37,5 (123)	132,6 (435)
5	5358 (11,813)	2404 (5301)	40,5 (133)	173,1 (568)
6	4999 (11,022)	2243 (4946)	43,3 (142)	216,4 (710)

\*Refer to Line Pulls and Reeving Information table for max. lifting capacity of wire rope. Synthetic rope layer height may vary and may reduce available line pull per layer.

## Working area diagram



Bold lines determine the limiting position of any load for operation within working areas indicated.

# Specifications

## Superstructure



### Boom (GRT655)

10,6 m - 34,8 m (34.9 ft - 114.3 ft) four-section, full-power boom.  
Synchronized extension and retraction. Maximum tip height: 38,1 m (125 ft)



### Boom (GRT655L)

10,8 m - 43,0 m (35.3 ft - 141.2 ft) five-section, full-power boom.  
Synchronized extension and retraction. Maximum tip height: 46,0 m (151 ft)



### \*Optional manual swingaway extension

7,9 m - 13,7 m (26 ft - 45 ft) telescopic swingaway extension. Offsettable at 0°, 15°, and 30°. Stows alongside base boom section.  
Maximum tip height (GRT655): 51,8 m (170 ft)  
Maximum tip height (GRT655L): 59,7 m (196 ft)



### Boom nose

Four nylon sheaves mounted on heavy-duty tapered roller bearings with removable pin-type guards. Quick-reeve type boom nose. Removable single sheave auxiliary boom nose with removable pin type rope guard.



### Boom elevation

One double – acting hydraulic cylinder with integral holding valve provides elevation from -3° to +80°.



### Crane Control System (CCS)

Combining the “Rated Capacity Limiter” (RCL), displaying all boom positions, slew angle, actual load, rated load, and percentage of outrigger extension within one display screen and the crane operating indicators, levels, warnings, faults, and more in a separate display screen. Electric joystick controllers with Jog dial input. Working range limiter and data logger capability.



### Counterweight

5579 kg (12,300 lb) one piece, pinned to superstructure.



### Cab

Operator controlled 20° hydraulic tilt, Full vision, all steel fabricated with acoustical lining and tinted safety glass throughout. Deluxe seat with headrest incorporates armrest-mounted electronic programmable single-axis or dual axis controllers and a jog dial for easier data input. Tilt/telescoping steering wheel with various controls incorporated into the steering column. Other standard features include: hot water heater, cab circulating air fan, sliding side and opening rear window, sliding skylight with electric wiper and sunscreen, electric windshield wash/wipe, fire extinguisher, seat belt, air conditioning, and dual cab mounted work lights.



### Swing

Variable speed, planetary swing drive with foot applied multi-disc proportional wet brake. Spring applied, hydraulically released swing brake. Two position mechanical swing lock pin, operated from cab. Maximum swing speed: 1.7 r.p.m.



### Hoist (main and auxiliary hoist)

Planetary reduction driven by axial piston motor. Grooved drum with automatic spring applied multi-disk wet brake. Electronic hoist drum rotation indicator, and hoist drum cable follower.

Maximum hoist single line pull:

1st layer: 7515 kg (16,568 lb)

3rd layer: 6256 kg (13,792 lb)

5th layer: 5358 kg (11,813 lb)

Maximum permissible single line pull:

5552 kg (12,240 lb) with 35 x 7 class rope

Maximum hoist single line speed (no load):

148 m/min (487 ft/min)

Rope construction:

35 x 7 rotation – resistant

Rope diameter:

16 mm (5/8 in)

Rope length:

Main hoist: 180 m (590 ft)

Aux. hoist : 180 m (590 ft)

Maximum usable rope:

213 m (700 ft) 5 layers

\* Denotes optional equipment

# Specifications

## Carrier



### Chassis

Parallel box section fabricated from high strength, low alloy steel with integral outrigger boxes, front and rear, tie-down, and towing lugs.



### Outrigger system

Four hydraulic telescoping single stage double box beam outriggers with inverted jack cylinders and integral jack holding valves. Three position settings, 0%, 50%, and fully extended. Polymer outrigger floats 500 mm (19.6 in) diameter. Outrigger monitoring system with outrigger beam position display on R.C.L. screen. Maximum outrigger pad load: 34 110 kg (75,200 lb)



### Outrigger controls

Controls and crane leveling indicator located in cab. Extension and retraction are thru the CCS system.



### Hydraulic system

Two main pumps [1] variable displacement piston and [1] gear with a combined output capacity of 331 l/min (88 gal/min). Maximum operating pressure: 276 bar (4000 p.s.i.) Return line in-tank filter with full flow by-pass protection and service indicator. Replaceable cartridge with 4 micron filtration rating per ISO cleanliness level of 17/15/12. Superstructure mounted oil cooler with thermostatically controlled electric motor driven fan/air to oil. System pressure test ports.



### Engine (Tier 4F)

Cummins QSB6.7L diesel six cylinder, turbo-charged with Cummins Compact Catalyst (CCC) and Selective Catalytic Reduction (SCR) combo muffler, using Diesel Exhaust Fluid (DEF) injection. Meets emissions per U.S. Tier 4F and E.U. stage IV. 164 H.P. (122 kW) at 2300 r.p.m., maximum torque: 540 lb/ft (732 Nm) at 1500 r.p.m. Fuel requirements: Maximum of 15 ppm "Ultra Low Sulfur Diesel Fuel" + diesel exhaust fluid (DEF).

*NOTE: Required for sale in areas with maximum 15 ppm sulfur content diesel fuel or country requirement.*



### Engine (Tier 3)

Cummins QSB6.7L diesel six cylinder, turbo-charged with 160 H.P. (119 kW) at 2500 r.p.m., maximum torque : 540 lb/ft (732 Nm) at 1500 r.p.m. Fuel requirements: Maximum of 5000 ppm Sulfur Diesel fuel.

*NOTE: Required for sale in areas with GREATER than 15 ppm sulfur content diesel fuel.*



### Fuel tank capacity

244 L (64.5 gal)



### Transmission

Rangeshift with 6 forward and 6 reverse speeds. (3 speeds high and 3 speeds low). Front axle disconnect for 4 x 2 drive.



### Axles

FRONT: Drive / steer with differential and planetary reduction hubs rigid mounted to frame.

REAR: Drive / steer with differential and planetary reduction hubs pivot mounted to frame. Automatic full hydraulic lockouts on rear axle permits 221 mm (8.7 in) of oscillation only with boom centered over the front.



### Brakes

Full hydraulic split (dual) circuit dry disc operating on all wheels with dual calipers. Parking brake is spring applied/hydraulically released on the front axle input shaft.



### Steering

Fully independent power steering.

Front: Fully hydraulic steering wheel controlled.

Rear: Fully hydraulic via separate momentary switch. Provides four steering modes, front only, rear only, coordinated, and crab. Rear steer not aligned indicator.

Outside 4ws coordinated steer radius:

23.5 x 25: 6,14 m (21.0 ft)

18.0 x 25: 6,09 m (20.8ft)

Inside 4ws coordinated steer radius:

23.5 x 25: 3,81 m (12.5 ft)

18.0 x 25: 3,83 m (12.5 ft)



### Tires

23.5 x 25 – 24 Bias ply rating

18.0 x 25 – 28 Bias ply rating



### Electrical system

Two 12V maintenance free batteries with disconnect. 24V system / 24V lighting



### Lighting

Full lighting including turn indicators, head, tail, brake, and hazard warning, and two work lights mounted on cab front.



### Maximum Drive Speed

30,3 kph (18.8 mph) with counterweight installed



### Gradeability (theoretical)

75.2% to drive train stall based on 34 310 kg (75,640 lb) GVW with 23.5 x 25 tires, std. counterweight, aux. hoist, and manual bi-fold extension. Max. allowed fore/aft grade: 30% limited by engine. Refer to operators manual for additional information.

## Miscellaneous standard equipment




















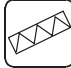












Full length aluminum fenders with full aluminum decking, dual rear view mirrors, hook block tie-down, electronic back-up alarm, front stowage tray, hot water cab heater/defroster, cab air conditioner, hoist mirrors, A/V warning system, combination tie-down/towing lugs, coolant sight level indicator, hoist access platform,

## \*Optional equipment

- Auxiliary Hoist Package: Includes GHP15 hoist with electronic hoist drum rotation indicator, hoist drum cable follower, 180 m (590 ft) of 16 mm (5/8 in) of 35 x 7 class rotation resistant wire rope.
- Auxiliary Lighting and Convenience Package: Includes superstructure mounted amber flashing light, dual base boom mounted floodlights, in-cab L.M.I. light bar, and rubber mat for storage trough.
- 360° positive mechanical swing lock
- Rear Pintle Hitch
- Cab-controlled cross axle differential locks (front and rear)
- wireless wind speed indicator
- Vertical external mounted L.M.I. light tower
- 29°C / -20°F cold weather package
- 40°C / -40°F arctic weather package
- Electric drive line retarder
- Emergency stop buttons on each side of carrier
- Second beacon light
- Refinery Package (certified spark arrestor + engine air shutdown available on T3 engine only)
- C.E. certificate package
- Russian certificate package
- Synthetic rope for main and/or auxiliary hoist
- Boom position indicator light
- Three-camera system (back-up, blind side, hoist)
- 270° view camera system
- Crane Star asset management system

\* Denotes optional equipment

# Symbols glossary

	Axles		Crane control system		Heavy duty jib		Outriggers
	Boom		Drive		Height (no max)		Radius
	Boom elevation		Electrical system		Hoist		Rotation
	Boom extension		Engine		Hook block		Speed
	Boom length		Extension		Hydraulic system		Steering
	Boom nose		Frame		Insert		Suspension
	Brakes		Fuel tank capacity		Lights		Swing
	Cab		Gear		Oil		Tires
	Counterweight		Grade		Outrigger controls		Transmission

## Manitowoc Cranes

### Regional headquarters

#### Americas

**Milwaukee, Wisconsin, USA**

Tel: +1 414 760 4600

**Shady Grove, Pennsylvania, USA**

Tel: +1 717 597 8121

Fax: +1 717 597 4062

#### Europe and Africa

**Dardilly, France - TOWERS**

Tel: +33 (0) 4 72 18 20 20

Fax: +33 (0) 4 72 18 20 00

**Wilhelmshaven, Germany - MOBILE**

Tel: +49 (0) 4421 294 0

Fax: +49 (0) 4421 294 4301

#### APAC

**Shanghai, China**

Tel: +86 21 6457 0066

Fax: +86 21 6457 4955

**Singapore**

Tel: +65 6264 1188

Fax: +65 6862 4040

#### Middle East and India

**Dubai, UAE**

Tel: +971 4 8862677

Fax: +971 4 8862678/79



This document is non-contractual. Constant improvement and engineering progress make it necessary that we reserve the right to make specification, equipment, and price changes without notice. Illustrations shown may include optional equipment and accessories and may not include all standard equipment.