



MLC100-1

Maximum capacity: 110 USt (100 t)

Maximum load moment: 2679 ft-kips (370.5 t-m)

Maximum boom length: 200 ft (61 m)

Maximum fixed jib length: 60 ft (18,3 m)

No. 117 3m jib inserts common with No. 138 and No. 124 fixed jib inserts



New Wide Cab with Crane Control System (CCS)

Boom butt remains installed for shipment allowing equalizer to remain reeved

Self contained Cummins QSB 6.7 engine package includes cooler, intake and after-treatment

Gantry utilized to raise counterweight for self assembly

Button style terminations on all hoists

Boom butt sheaves for self assembly

All ladders, steps, handrails and platforms standard

Single part number counterweights

NEW! - Wide Cab design with CCS and ergonomically designed consoles to increase operator comfort

Retractable crawlers for ease of maneuverability and transport



Contact your local dealer for more information; or find one on the dealer locator at www.manitowoc.com

Benefits

Optimized transport and disassembly

- Boom mounted sheaves allow for self-assembly without boom top installation
- Boom butt ships with machine allowing for equalizer to remain reeved for quicker assembly on site

Outstanding operator comfort and control

- New wide body cab provides more interior space
- Platforms, hand rails, steps and ladder to access all points of machine
- CCS (Crane Control System) with dual RCL and Crane Display screen to maximize operator interface

New Wide Cab

- 10% more interior space for operator
- Full high back seat with headrest and moveable riser supports operator comfortably
- Utilizes Crane Control System (CCS)
- Storage shelving located in the rear of the cab
- Redesigned consoles providing more legroom
- Swing and travel alarms ensure maximum operator awareness
- Left side console rotates for improved egress
- Six-way electric seat riser

Self-Assembly

- Gantry raised counterweight reduces components and maintenance
- Boom butt mounted sheaves allow for reeving assembly hook without installing boom top
- Additional boom butt mounted sheave allows for carbody counterweight installation without outside assist
- Button style wire rope terminations for easy reeving

Transport

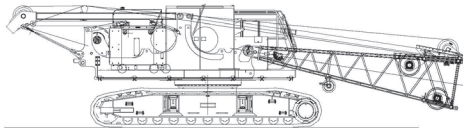
- Designed to be transported with minimal permitted loads
- Increased hook height allows for complete self-assembly with various trailer heights

Serviceability and support

- Elimination of wireless components to reduce complexity for increased reliability
- Cummins engine, cooler, air cleaner and after treatment package allows for better serviceability
- Crane Control System (CCS) allows for troubleshooting through the control system
- Codes can be cross referenced through the Manitowoc diagnostics code app
- Supported by Manitowoc's world class dealer network

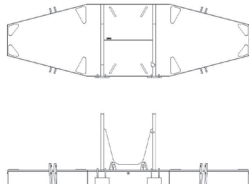
Rotating Bed w/ Boom Butt

Height	11' 2"
Length	42' 4"
Width	11' 8"
Weight	91,500 lb



Counterweight Tray

Height	4' 5"
Length	14' 7"
Width	4' 5"
Weight	17,700 lb



Upper Counterweight

Height	3' 11"
Length	4' 10"
Width	4' 3"
Weight	13,800 lb



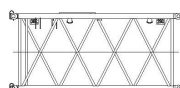
Lower Counterweight

Height	2' 5"
Length	5' 11"
Width	3' 7"
Weight	11,600 lb



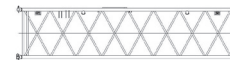
3 m No. 290 Boom Insert

Height	4' 7"
Length	10' 2"
Width	5' 3"
Weight	700 lb



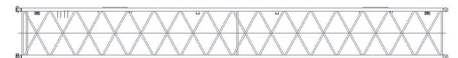
6 m No. 290 Boom Insert

Height	4' 7"
Length	20' 0"
Width	5' 3"
Weight	1200 lb



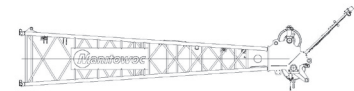
12 m No. 290 Boom Insert

Height	4' 7"
Length	39' 8"
Width	5' 3"
Weight	2100 lb



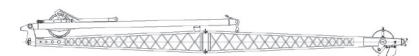
7 m No. 290 Boom Top

Height	4' 11"
Length	24' 7"
Width	5' 3"
Weight	3200 lb



Basic Jib Assembly

Height	3' 4"
Length	32' 8"
Width	3' 1"
Weight	2000 lb



3 m Fixed jib insert

Height	1' 10"
Length	10' 2"
Width	2' 6"
Weight	170 lb



PRELIMINARY - Capacities

FJ10:117 fixed jib on B10:290 boom

73,000 lb upper counterweight, 23,100 lb carbody counterweight

360°

lb x 1000

30 ft jib at 10° offset

Radius (ft)	Boom Length (ft)				
	62	92	121	151	180
26	25.0				
30	25.0				
34	25.0	25.0			
38	25.0	25.0	25.0		
42	25.0	25.0	25.0	25.0	
46	25.0	25.0	25.0	25.0	25.0
50	25.0	25.0	25.0	25.0	24.9
60	25.0	25.0	25.0	25.0	24.4
70	24.0	23.5	22.8	22.2	21.6
80	20.0	19.5	18.8	18.2	17.6
90	17.0	16.5	15.8	15.2	14.5
100		14.1	13.4	12.8	12.2
110		12.2	11.5	10.9	10.2
120		10.6	9.9	9.3	8.6
130			8.6	8.0	7.3
140			7.4	6.8	6.2
150				5.9	5.2
160				5.0	4.3
170				4.0	3.5

40 ft jib at 10° offset

Radius (ft)	Boom Length (ft)				
	62	92	121	151	180
30	23.2				
34	22.8				
38	22.4	22.8			
42	22.0	22.5	22.4		
46	21.7	22.2	22.3	21.9	
50	21.3	21.9	22.1	21.8	21.0
60	20.7	21.4	21.7	21.5	20.8
70	19.2	20.9	21.3	21.2	20.5
80	17.1	19.8	19.2	18.6	18.0
90	15.5	16.8	16.1	15.5	14.9
100	14.6	14.4	13.7	13.1	12.5
110		12.5	11.8	11.2	10.5
120		10.9	10.2	9.6	8.9
130		9.5	8.8	8.2	7.6
140			7.7	7.1	6.4
150			6.7	6.1	5.4
160				5.2	4.6
170				4.5	3.8
180				3.4	3.0

50 ft jib at 10° offset

Radius (ft)	Boom Length (ft)				
	62	92	121	151	180
34	19.9				
38	19.5	19.7			
42	19.2	19.5			
46	18.9	19.2	19.2		
50	18.6	19.0	19.0	18.7	
60	17.9	18.5	18.6	18.4	17.8
70	16.5	18.0	18.3	18.2	17.6
80	14.5	17.6	18.0	17.9	17.4
90	13.0	17.0	16.3	15.7	15.1
100	11.8	14.6	13.9	13.3	12.7
110	11.1	12.7	12.0	11.4	10.7
120		11.1	10.4	9.8	9.1
130		9.7	9.1	8.4	7.8
140		8.6	7.9	7.3	6.6
150			6.9	6.3	5.6
160			6.0	5.4	4.7
170				4.7	4.0
180				3.9	3.3

60 ft jib at 10° offset

Radius (ft)	Boom Length (ft)				
	62	92	121	151	180
38	17.5				
42	17.2	17.3			
46	16.9	17.1	16.9		
50	16.6	16.8	16.8	16.4	
60	15.9	16.4	16.4	16.1	15.4
70	15.3	15.9	16.0	15.9	15.3
80	13.3	15.4	15.7	15.7	15.1
90	11.7	15.0	15.4	15.4	14.9
100	10.5	14.7	14.1	13.5	12.8
110	9.6	12.8	12.2	11.5	10.9
120	9.0	11.2	10.6	9.9	9.3
130		9.9	9.2	8.6	7.9
140		8.7	8.1	7.4	6.7
150		7.7	7.1	6.4	5.8
160			6.2	5.6	4.9
170			5.4	4.8	4.1
180				4.1	3.4
190				3.3	