

## GRT655L

Capacity: 55 USt (51 t)

Main boom: 35 ft - 141 ft (10,6 m - 42,9m)

Maximum boom extension: 26 ft - 45 ft (7,9 m - 13,7 m)

Maximum tip height: 196 ft (59,7 m)

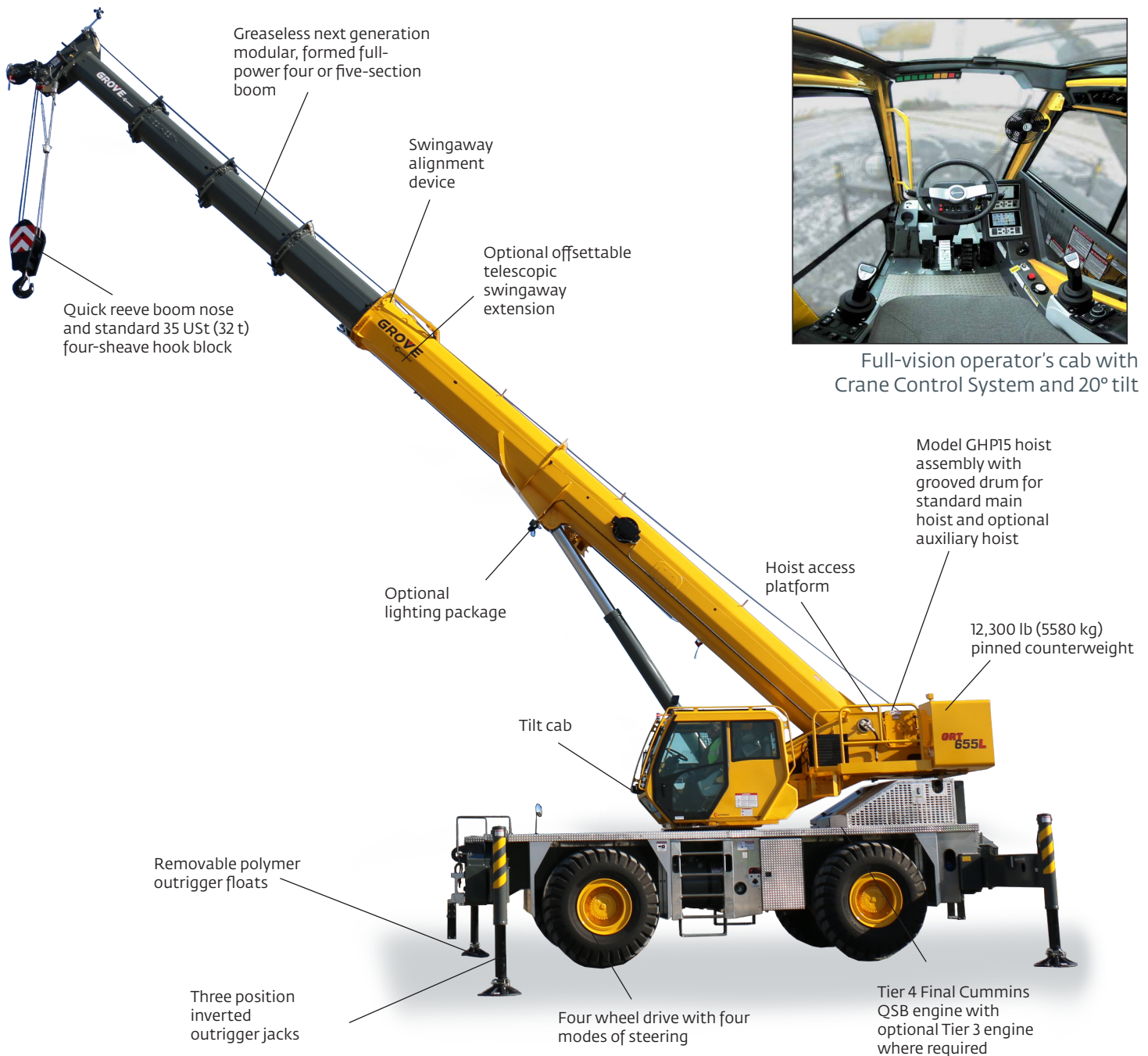
## GRT655

Capacity: 55 USt (51 t)

Main boom: 35 ft - 114 ft (10,6 m - 34,7 m)

Maximum boom extension: 26 - 45 ft. (7.9 - 13.7m)

Maximum tip height: 170 ft (51,8 m)



## Benefits

### Unmatched capacity

- 55 USt (51 t) rated capacity
- Competitive load charts in this tonnage class (do more for less)

### Optimized productivity

- GRT655L offers the user 27.3 ft (8.3 m) more main boom length than the closest competitive model for better reach and greater versatility than any other model in its class.
- GRT655L max tip height (main boom and extension): 196 ft (59,7 m)
- GRT655 max tip height (main boom and extension): 170 ft (51,8 m)
- 12,240 lb (5552 kg) permissible line pull
- Four modes of steering (improves maneuvering in tight areas)

### Outstanding versatility and durability

- 22 ft (6,8 m) outrigger spread with three settings (get closer to the load)
- Designed for the worldwide market

### Four or five-section, modular formed boom

- The GRT655L/GRT655 improves lateral strength of all boom sections by utilizing the next generation in Grove's formed boom technology
- Large easy-access grease-less wear pads provide superior boom alignment when telescoping and allow an excellent transition of weights between sections
- Swingaway alignment device for smooth set up

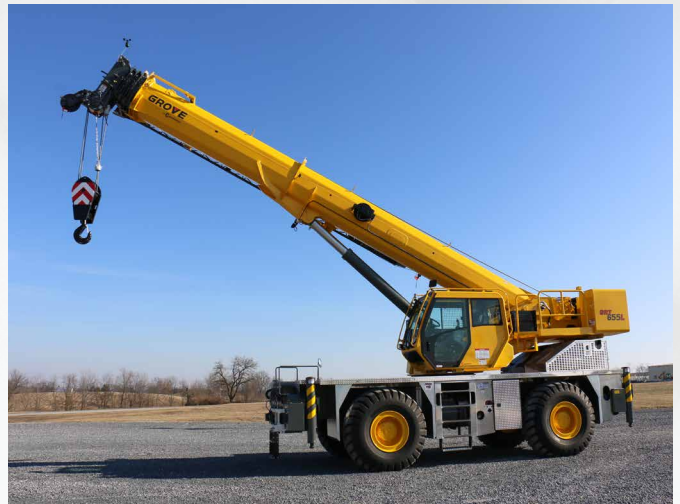
### Optional extensions

- 26 ft - 45 ft (7,9 m - 13,7 m) manual telescopic swingaway extension, offsettable at 0°, 15° and 30°

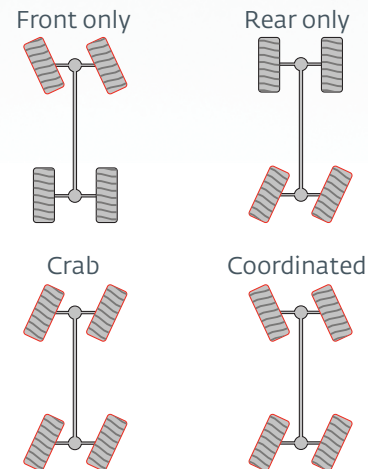


### Inverted outrigger jacks

- Three position settings: 0%, 50% and 100%
- Polymer outrigger floats: 20 in (508 mm) in diameter
- Outrigger Monitoring System



### Steering modes



### Crane Control System (CCS)

- Hardware and software that integrates the Crane Control with the Rated Capacity Limiter (RCL) to create one system
- Tilttable, full color, high resolution Operating and RCL displays for improved visibility
- Designed for maximum operator comfort
- Graphical setup wizard makes startup quick and easy





# GRT655 -PRELIMINARY - Load chart

Imperial 85%



35 ft - 114.3 ft



12,300 lb



100%



360°



Pounds

Feet	Main boom length in feet									
	34.9	43.7	52.5	61.4	70.2	79	87.8	96.7	105.5	114.3
8	110,000* (67)									
10	88,750 (63.2)	66,400 (69.1)	66,400 (72.8)	66,400 (75.3)	66,400 (77.2)					
12	80,150 (59.3)	66,400 (66.2)	66,400 (70.4)	66,400 (73.4)	66,400 (75.5)	57,800 (77.2)				
15	69,550 (53.1)	66,400 (61.7)	66,400 (66.8)	65,450 (70.4)	60,450 (73)	51,050 (74.9)	42,250 (76.5)	33,300 (77.7)		
20	55,300 (41.1)	55,800 (53.6)	54,900 (60.6)	53,900 (65.3)	49,400 (68.6)	42,050 (71.1)	34,950 (73.1)	33,300 (74.7)	27,500 (76)	21,700 (77.1)
25	40,400 (24.1)	46,250 (44.5)	46,250 (53.9)	45,600 (59.9)	41,300 (64.1)	35,150 (67.2)	29,250 (69.6)	28,150 (71.6)	27,000 (73.2)	21,700 (74.5)
30		36,350 (33.3)	36,750 (46.6)	36,950 (54.2)	35,250 (59.3)	29,950 (63.1)	24,900 (66)	23,950 (68.4)	23,150 (70.3)	21,700 (71.9)
35		24,950 (15.1)	27,750 (38.1)	27,950 (48)	28,050 (54.3)	25,950 (58.9)	21,500 (62.4)	20,650 (65.1)	20,000 (67.3)	19,400 (69.2)
40			21,750 (27.2)	22,100 (41.1)	22,200 (49)	22,250 (54.5)	18,750 (58.6)	18,050 (61.8)	17,450 (64.3)	16,900 (66.5)
45				17,850 (32.9)	18,050 (43.1)	18,100 (49.8)	16,550 (54.6)	15,900 (58.3)	15,350 (61.2)	14,900 (63.7)
50				14,700 (21.9)	14,900 (36.5)	15,000 (44.7)	14,700 (50.4)	14,100 (54.7)	13,600 (58)	13,150 (60.8)
55					12,450 (28.5)	12,600 (39.1)	12,650 (45.9)	12,550 (50.9)	12,100 (54.7)	11,700 (57.9)
60					10,550 (17)	10,700 (32.6)	10,800 (41)	10,850 (46.9)	10,850 (51.3)	10,500 (54.8)
65						9130 (24.6)	9240 (35.6)	9310 (42.5)	9340 (47.6)	9350 (51.6)
70						7820 (11.9)	7920 (29.2)	8000 (37.8)	8050 (43.8)	8060 (48.3)
75							6810 (21.1)	6890 (32.5)	6950 (39.6)	6970 (44.8)
80							4650 (3.8)	5940 (26.1)	6000 (34.9)	6050 (41)
85								5120 (17.7)	5180 (29.7)	5220 (36.9)
90									4460 (23.3)	4500 (32.4)
95									3830 (14.3)	3870 (27.1)
100										3310 (20.6)
105										2820 (10.6)

NOTE: ( ) Boom angles are in degrees.  
\*Special equipment required to lift this capacity.

Boom angle	Lifting capacities at 0° boom angle									
	34.9	43.7	52.5	61.4	70.2	79	87.8	96.7	105.5	114.3
0°	17,600 (27.1)	12,700 (35.9)	9480 (44.7)	7160 (53.6)	5420 (62.4)	4060 (71.2)	2970 (80)	2070 (88.9)	1320 (97.7)	

NOTE: ( ) Reference radii in feet.

# GRT655 -PRELIMINARY - Load chart

Imperial 85%



35 ft - 114.3 ft



26 ft - 45 ft



12,300 lb



100%



360°



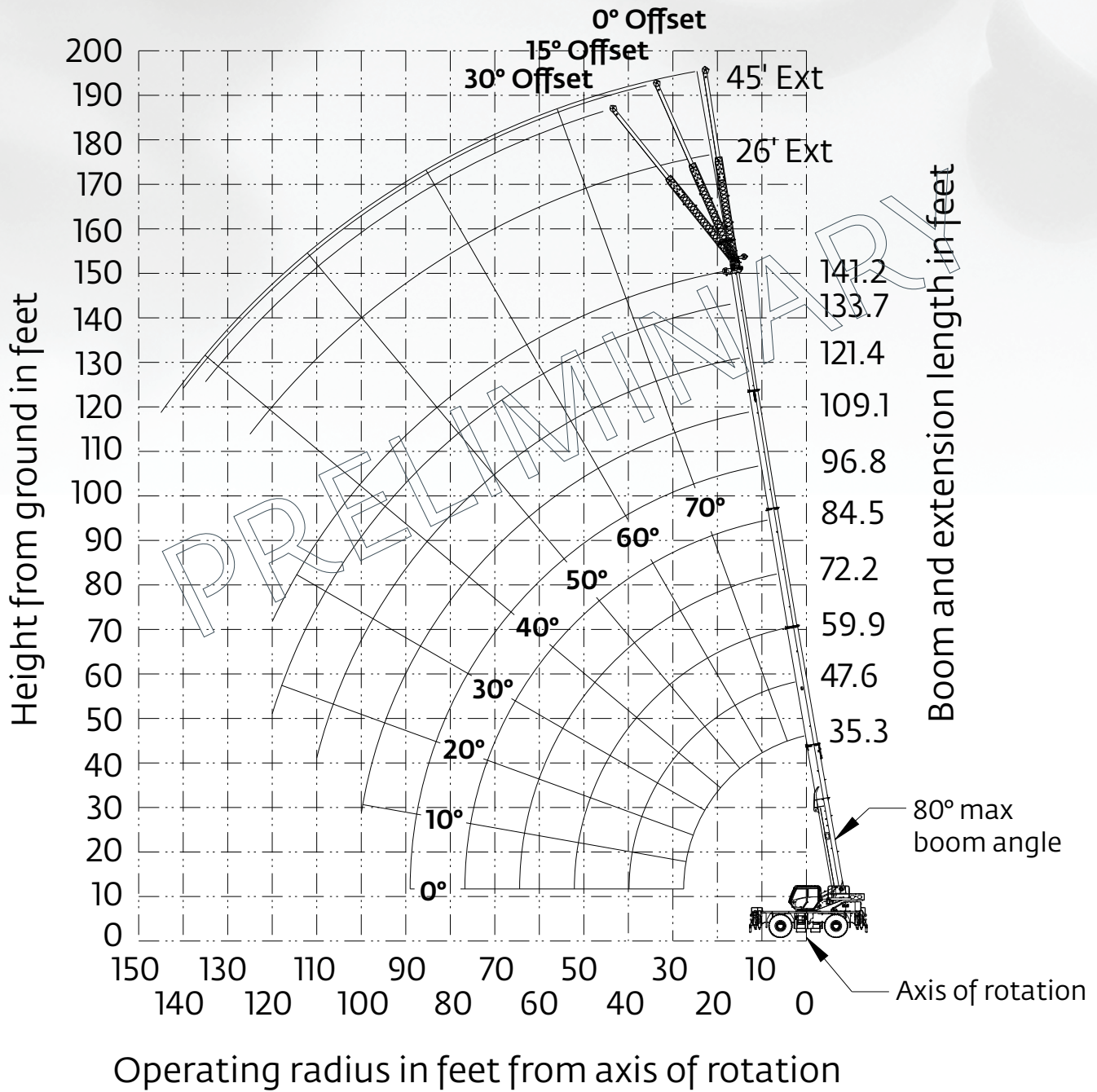
Pounds

Feet	26 ft LENGTH			45 ft LENGTH		
	0° OFFSET	15° OFFSET	30° OFFSET	0° OFFSET	15° OFFSET	30° OFFSET
20	12,200 (79.2)					
25	12,200 (77.1)	9590 (79.6)		8460 (78.6)		
30	12,200 (75)	9000 (77.5)	6710 (79.8)	7710 (76.8)		
35	12,200 (72.8)	8490 (75.4)	6460 (77.7)	7060 (74.9)	5120 (78.9)	
40	11,950 (70.7)	8020 (73.2)	6230 (75.5)	6540 (73.1)	4890 (77.1)	
45	10,950 (68.5)	7610 (71)	6030 (73.3)	6080 (71.2)	4670 (75.2)	3750 (78.8)
50	10,100 (66.3)	7250 (68.8)	5840 (71)	5680 (69.3)	4470 (73.2)	3640 (76.8)
55	9410 (64)	6940 (66.6)	5670 (68.7)	5320 (67.3)	4290 (71.3)	3530 (74.8)
60	8800 (61.7)	6630 (64.2)	5520 (66.4)	5020 (65.4)	4130 (69.3)	3430 (72.8)
65	8270 (59.4)	6380 (61.9)	5380 (64)	4750 (63.4)	3980 (67.3)	3330 (70.7)
70	7790 (57)	6140 (59.5)	5250 (61.5)	4500 (61.3)	3840 (65.2)	3250 (68.6)
75	7080 (54.5)	5920 (57)	5130 (59)	4280 (59.3)	3720 (63.2)	3170 (66.5)
80	6140 (51.9)	5720 (54.4)	5020 (56.3)	4080 (57.1)	3600 (61)	3100 (64.3)
85	5320 (49.3)	5540 (51.7)	4930 (53.6)	3900 (55)	3480 (58.8)	3030 (62.1)
90	4610 (46.5)	4900 (49)	4850 (50.8)	3740 (52.7)	3370 (56.6)	2970 (59.7)
95	3980 (43.6)	4240 (46)	4440 (47.8)	3590 (50.4)	3280 (54.3)	2910 (57.3)
100	3430 (40.5)	3660 (42.9)	3820 (44.6)	3450 (48)	3180 (51.8)	2860 (54.9)
105	2930 (37.2)	3130 (39.6)	3270 (41.2)	3320 (45.5)	3100 (49.3)	2820 (52.3)
110	2490 (33.7)	2660 (36)	2770 (37.4)	3200 (42.9)	3020 (46.7)	2770 (49.5)
115	2090 (29.7)	2240 (32.1)	2320 (33.3)	2820 (40.2)	2950 (44)	2740 (46.6)
120	1730 (25.3)	1850 (27.5)		2450 (37.3)	2730 (41)	2710 (43.6)
125	1410 (19.8)	1490 (22)		2120 (34.2)	2360 (37.9)	2530 (40.2)
130	1120 (12.1)			1810 (30.8)	2020 (34.4)	2160 (36.5)
135				1530 (27.1)	1710 (30.6)	1810 (32.3)
140				1280 (22.7)	1420 (26.1)	
145				1050 (17.3)	1140 (20.5)	

NOTE: ( ) Boom angles are in degrees.

# GRT655L - PRELIMINARY - Working range

Imperial 85%



# GRT655L -PRELIMINARY - Load chart

Imperial 85%



35 ft - 141 ft



12,300 lb



100%



360°



Pounds

Feet	Main boom length in feet									
	35.3	47.6	59.9	72.2	84.5	96.8	109.1	121.4	133.7	141.2
8	"110,000" (67.2)"									
10	"87,750 (63.6)"	42,000 (70.9)	41,500 (75)	40,400 (77.6)						
12	79,150 (59.7)	42,000 (68.2)	41,500 (72.9)	40,300 (75.9)						
15	68,650 (53.6)	42,000 (64.2)	41,500 (69.9)	40,300 (73.4)	38,900 (75.9)	35,200 (77.8)				
20	54,550 (42)	42,000 (57.1)	41,500 (64.6)	40,300 (69.2)	36,250 (72.4)	31,450 (74.7)	27,950 (76.5)	21,900 (77.9)		
25	40,300 (25.8)	42,000 (49.3)	41,500 (59)	36,250 (64.8)	32,250 (68.7)	27,750 (71.6)	24,900 (73.7)	21,900 (75.4)	17,600 (76.8)	15,400 (77.5)
30		36,800 (40.3)	37,250 (53.1)	32,750 (60.3)	29,050 (65)	24,650 (68.4)	22,350 (71)	20,250 (73)	17,600 (74.6)	15,400 (75.4)
35		27,500 (28.8)	28,100 (46.7)	28,350 (55.5)	26,450 (61.2)	22,150 (65.1)	19,650 (68.1)	18,450 (70.5)	16,850 (72.3)	15,400 (73.3)
40			22,100 (39.3)	22,350 (50.4)	22,500 (57.1)	20,100 (61.8)	17,100 (65.2)	16,450 (67.9)	15,500 (70.1)	14,700 (71.2)
45			17,750 (30.5)	18,100 (44.9)	18,250 (52.9)	17,900 (58.3)	15,000 (62.3)	14,450 (65.3)	14,000 (67.7)	13,600 (69)
50			14,550 (17.5)	14,900 (38.7)	15,100 (48.4)	15,150 (54.7)	13,300 (59.2)	12,750 (62.7)	12,350 (65.4)	12,150 (66.8)
55				12,400 (31.4)	12,650 (43.6)	12,700 (50.9)	11,800 (56.1)	11,350 (60)	10,950 (63)	10,800 (64.5)
60				10,450 (22)	10,700 (38.2)	10,850 (46.9)	10,550 (52.8)	10,100 (57.2)	9790 (60.5)	9620 (62.3)
65					9110 (32.1)	9270 (42.6)	9340 (49.4)	9060 (54.3)	8740 (58)	8580 (59.9)
70					7760 (24.6)	7930 (37.9)	8020 (45.7)	8070 (51.3)	7820 (55.4)	7670 (57.5)
75					6630 (13.2)	6790 (32.6)	6910 (41.9)	6960 (48.1)	6990 (52.7)	6860 (55)
80						5820 (26.3)	5940 (37.6)	6010 (44.8)	6040 (50)	6050 (52.5)
85						4990 (17.9)	5100 (33)	5190 (41.3)	5210 (47.1)	5230 (49.9)
90							4370 (27.6)	4450 (37.4)	4500 (44)	4510 (47.1)
95							3720 (20.8)	3800 (33.3)	3860 (40.8)	3880 (44.2)
100							3150 (10.1)	3230 (28.5)	3290 (37.3)	3320 (41.2)
105								2720 (22.8)	2770 (33.5)	2800 (37.9)
110								2260 (15.1)	2310 (29.2)	2340 (34.4)
115									1900 (24.3)	1930 (30.5)
120									1530 (18.1)	1550 (26.1)

NOTE: ( ) Boom angles are in degrees.

\*Special equipment required to lift this capacity.

Boom angle	Lifting capacities at 0° boom angle									
	35.3	47.6	59.9	72.2	84.5	96.8	109.1	121.4	133.7	141.2
0°	16,350 (27.5)	10,350 (39.8)	6840 (52.1)	4500 (64.4)	2830 (76.7)	1590 (89)				

NOTE: ( ) Reference radii in feet.

# GRT655L -PRELIMINARY - Load chart

Imperial 85%



35 ft - 141 ft



26 ft - 45 ft



12,300 lb



100%



360°



Pounds

Feet	26 ft LENGTH			45 ft LENGTH		
	0° OFFSET	15° OFFSET	30° OFFSET	0° OFFSET	15° OFFSET	30° OFFSET
25	8610 (79.2)					
30	8610 (77.4)	8650 (79.6)		6010 (78.7)		
35	8610 (75.7)	8650 (77.8)	6580 (79.7)	6010 (77.2)		
40	8610 (73.9)	8400 (76)	6380 (77.9)	6010 (75.6)	5010 (79)	
45	8610 (72.1)	7820 (74.2)	6200 (76.1)	6010 (74)	4810 (77.4)	
50	8470 (70.3)	7280 (72.4)	6030 (74.3)	6010 (72.4)	4630 (75.8)	3690 (78.8)
55	7860 (68.5)	6800 (70.6)	5870 (72.4)	5760 (70.7)	4460 (74.1)	3,610 (77.2)
60	7290 (66.6)	6360 (68.7)	5730 (70.5)	5460 (69.1)	4310 (72.5)	3520 (75.5)
65	6780 (64.7)	5980 (66.8)	5440 (68.6)	5170 (67.4)	4170 (70.8)	3430 (73.8)
70	6330 (62.8)	5620 (64.9)	5160 (66.7)	4940 (65.8)	4040 (69.1)	3350 (72.1)
75	5930 (60.9)	5310 (62.9)	4900 (64.7)	4710 (64.1)	3920 (67.4)	3280 (70.3)
80	5570 (58.9)	5020 (61)	4660 (62.7)	4500 (62.3)	3810 (65.7)	3210 (68.6)
85	5110 (56.8)	4750 (58.9)	4440 (60.6)	4310 (60.6)	3700 (63.9)	3150 (66.8)
90	4380 (54.8)	4510 (56.8)	4230 (58.5)	4060 (58.8)	3600 (62.1)	3080 (64.9)
95	3740 (52.6)	4070 (54.7)	4050 (56.3)	3840 (57)	3440 (60.3)	3030 (63)
100	3170 (50.4)	3470 (52.5)	3710 (54.1)	3640 (55.1)	3280 (58.4)	2980 (61.1)
105	2660 (48.2)	2940 (50.2)	3150 (51.7)	3350 (53.2)	3130 (56.5)	2930 (59.2)
110	2210 (45.8)	2460 (47.8)	2640 (49.3)	2890 (51.3)	2990 (54.5)	2820 (57.1)
115	1800 (43.3)	2020 (45.4)	2180 (46.8)	2470 (49.3)	2860 (52.5)	2710 (55.1)
120	1420 (40.8)	1630 (42.8)	1770 (44.1)	2090 (47.2)	2470 (50.4)	2610 (52.9)
125	1090 (38)	1270 (40)	1390 (41.3)	1750 (45)	2090 (48.3)	2370 (50.7)
130			1040 (38.3)	1440 (42.8)	1750 (46)	1990 (48.3)
135				1150 (40.5)	1440 (43.7)	1650 (45.9)
140					1140 (41.2)	1330 (43.3)
145						1030 (40.5)

NOTE: ( ) Boom angles are in degrees.

